



*"We Are Here To Assist You At Every Step  
Through Your Journey To Success"*





# About Us

## Who We Are

*Ar-kom is an international engineering company based in Dubai, UAE that provides solutions to address the evolving needs of industrial factories.*

*Companies in the process industries need to deliver results in order to survive. For many companies there is a fine line between success and failure. Staying on the right side of this line and delivering sustainable results throughout years requires experience, knowledge, passion, determination, accumulated effort and expert assistance.*

*We apply our expertise in innovation to industry's biggest challenges. Responsibility is a core part of our strategy. As an innovation based company, we strive to develop projects that can help change the practice of our customers in the road to success.*

*Ar-kom is established as a consulting engineering company and worked initially with customers in the confectionary and food industry. Ar-kom progressively expanded its skills in project management, design engineering and the installation of plants and associated utilities.*

*Ar-kom assists clients in the improvement of business performance to meet global competition requirements. Optimized solutions are provided for technology, engineering, procurement, project management and operational excellence thereby enabling clients to achieve increased efficiency and long term profitability.*

*For all projects large or small Ar-kom is strongly customer oriented. The two most important words ever for Ar-kom are “customer satisfaction”. We provide flexibility, close communication and swift response as well as providing high level technical skills, cost effectiveness and efficiency. We use technology - based innovation and new business approaches to improve outcome for our customers.*

*Besides supplying the most appropriate machines based on customer needs, our commitment is to provide engineering and complete project support service appropriate to our customer’s investment levels.*

*We executed projects in Turkey and Algeria successfully. Currently, we are striving towards expanding our horizons to offer turnkey project solutions to our potential customers in GCC, Middle Eastern and African countries.*

## Mission

*To be your ultimate solution provider for the confectionery and food industry through one stop shop approach and our expertise. We are here to assist you at every step through your journey to success.*

## Vision

*To become the leading company in the GCC, Middle East and Africa providing solutions, expertise and know how to our customers in the confectionery and food industry.*

## Values

- **Customer Satisfaction**
- **Sustainability**
- **Innovation**
- **Responsibility**
- **Effectiveness**
- **Respect**
- **Trust**
- **Integrity**
- **Enthusiasm**

## Strengths

- *In-house trained team to design, coordinate and supervise the complete integration of our various partners or preferred suppliers according to customer requirements.*
- *Supporting and developing the synergy between various focus points to deliver a complete project.*
- *Together with our solution partners we offer one stop shop approach and turnkey solutions.*
- *Our service portfolio and experience support customers in selecting the ideal equipments and ideal combinations to prepare the products to the launch with the right packaging in relevant markets. We can even provide marketing solutions when needed.*
- *We are both able to expand business possibilities by making necessary adjustments in manufacturing lines and to complete a turnkey factory project from scratch.*
- *The support is then topped with our service network and after sales follow up*  
**WE ARE HERE TO MAKE YOUR DREAMS COME TRUE.**





***Project Management Consultancy***  
***Conceptual Planning***  
***Feasibility Study***  
***Planning & Design***  
***Detail Engineering R&D***  
***Procurement Process***  
***Installation & Commissioning***  
***After Sale Service***



## Why To Choose Us?

### Technical and Methodical Expertise

*Up-to-date know-how and well-proven methods serve to supplement your internal competencies and ensure best possible outcome for your business.*

### Resources

*Our external support will give you the freedom to focus better to your internal resource bottlenecks and solve them more efficiently. Through our international solution partners, we offer tailor-made and flexible resource optimization to our customers according to various business needs / demands.*

### Innovation

*Different viewpoints provided by experts can sparkle new ideas, approaches which then turn out to be innovative solutions that will yield long term cost effectiveness for your business.*

### Moderation

*Being neutral consultants, we offer unbiased opinions. Therefore, we are able to reconcile different interests and positions.*

### Trust

*We provide objective recommendations for achieving the optimal cost-benefit ratio. We pay highest importance to maintain confidentiality although it can be challenging in certain circumstances, you can be sure of all your documents and information will be disposed properly and kept strictly confidential with us.*

### Dynamic Team

*Our team operates with highest flexibility levels so that we address all customer needs effectively and on time. We keep our communication channels open 7/24 to be able realize our outstanding service level ensuring the highest possible customer satisfaction level.*





***Project Management Consultancy  
Conceptual Planning  
Feasibility Study  
Planning & Design  
Detail Engineering R&D  
Procurement Process  
Installation & Commissioning  
After Sale Service***





DREAMS TO REALITY

## Our Services

### Project Management and Consultancy

*We give full service of project management to our customers using globally accepted PMI methods. Well proven reliable systems ensure effective project management to meet customer's objectives, including:*

- *Preparation and fine tuning of master project program*
- *Critical path analysis and reviews*
- *Project steps and execution of the agreed plan*
- *Detailed cost and contract control*
- *Site infrastructure and utility services*
- *Construction monitoring*
- *Process and performance reviews*
- *Scheduling of hot and cold commissioning*
- *Maintenance, planning and management.*

### Conceptual Planning and Feasibility Study

*The most prominent performance indicators in today's business life are high efficiency, sustainability and profitability. Ar-kom provides objective analysis, technology, construction and commissioning to minimize risks in relevant markets. Ar-kom aims to secure maximum flexibility to cover for future changes in energy and material costs and product specifications. Therefore, Ar-kom performs in dept analysis for;*

- *Market feasibility and bankable studies*
- *Business and master plans and due diligence*
- *Definitive cost estimates and budgets.*



CONCEPTUAL PLANNING

DETAIL ENGINEERING R&D

FEASIBILITY STUDY

PROJECT MANAGEMENT CONSULTANCY

PROCUREMENT PROCESS

INSTALLATION & COMMISSIONING

**ar-kom**

DREAMS TO REALITY

PLANNING & DESIGN

AFTER SALE SERVICE

## Detail Engineering and R&D

*Ar-kom provides a structured approach to multi-discipline design. The scope of this work typically includes;*

- *Basic and detailed plant design and specification*
- *Mechanical, electrical and process control engineering*
- *Civil and structural design*
- *Energy and utilities systems engineering*
- *Preparation of engineering standards*
- *Design reviews*
- *Environmental engineering*
- *Coordination of design, manufacturing and supplying*
- *Recipe research*
- *Product development*
- *Packaging design and marketing activities*



## Planning and Design

*Ar-kom mutually agrees with the customer on the process type and technology optimized manufacturing capacities, operational costs and layout of the manufacturing zone.*

*These steps include;*

- *Technical, operational and construction due diligence*
- *Process technology, design and plant layout*
- *Process P&ID*
- *Contract strategy and planning*
- *Enquiry and contract documentation*
- *Whole life tender evaluation*
- *Assistance with contract negotiation*
- *Inspections and expediting*
- *Quality assurance planning and management*
- *Vendor appraisal and surveillance*
- *Quality audits and inspections*
- *Construction and test supervision*
- *Enforcement of contract guarantees*

## Procurement Process

*Procurement process is a critical step of all projects and it must be handled with the outmost expertise, attention and care to avoid possible risks.*

*The approach to procurement and the contract matrix must be defined at the outset.*

*Ar-kom has extensive experience in providing.*



## After Sale Service

*Ar-Kom acts as a communication office between the solution partners and customers for spare parts and service engineers.*

*Besides, Ar-kom provides support for maintenance planning and execution as well as spare parts and service for the in house manufactured parts.*



## Service Algorithm

- Upon request from the customer, Ar-kom provides an independent expert report in order to achieve a neutral assessment regarding customer needs.
- After agreeing to carry out defined services, Ar-kom often sets up a joint project team together with the customer, and takes the responsibility to realize that the set goals are achieved according to mutually agreed plan.
- Ar-kom appoints full or part time technical specialists and project leaders for the customer during the project span. Most of the time, consultants carry out specific assignments within customer's premises.
- Agreed project, service and/or products are delivered to the customers on time.
- Supervising, follow-up and necessary training are provided to customers either periodically or on demand basis.

# Examples of our Work



*Chocolate Factory Process*



*Chocolate Factory Process*



*Biscuit Factory Process*



*Biscuit Factory Process*



*Cake Factory Process*



*Cake Factory Process*



*Confectionery Factory Process*



*Milk and Milk Derivatives*



*Baker's Yeast Plants*



*Baker's Yeast Plants*



*Edible Salt Plants*



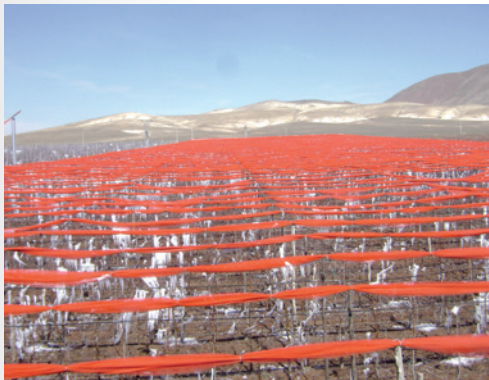
*Edible Salt Plants*



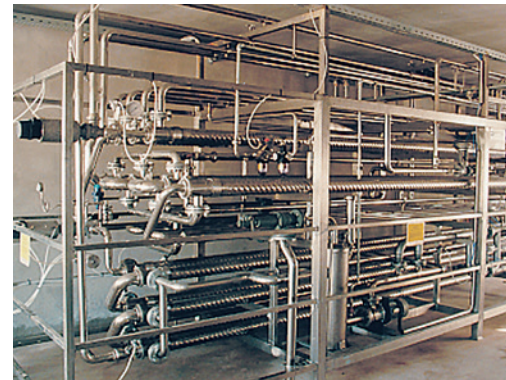
*Pharmaceutical and chemical plants*



*Pharmaceutical and chemical plants*



*From farm to fork fruit processing*



*From farm to fork fruit processing*



## Solution Partners

**SOLLICH** 

**CHOCOTECH** 

**NETZSCH**



## Key Projects



*Feasibility Study & Business Plan  
For Confectionary Factory*

**International  
Power  
Industrie**

*Process Design & Consultancy  
For Wafer Lines*



*Design & Application Project  
For Fully Automated Secondary  
Packaging and Pasteurization System*



*Factory & Process  
Design Consultancy*



*Factory & Process  
Design Consultancy*



*Factory & Process  
Design Consultancy*

**ZÜBER**

*Factory Relocation Project  
Factory & Process Design  
Consultancy*

**ALTERNA**



*Factory & Process Design  
Sole Contractor of Turn Key Project*

**tatbak**  
"Fabrika Satış Mağazası"

*Factory & Process  
Design Consultancy  
Factory Chocolate Line  
& Kitchen Project*

**divan**

*Factory Relocation Project  
Factory Utilites Design & Application  
For Enrobing & Moulding Lines  
Factory Process Automation  
For Enrobing & Moulding Lines*



*Factory Chocolate Line  
& Kitchen Project  
Factory Utilites Design  
& Application*

**DREA  
MSTO  
REAL  
ITY**





*We Don't Believe In Problems  
We Believe In Solutions*

P.O. Box 340505  
Unit no. 30-01-971, Jewellery & Gemplex 3  
Plot no. DMCC-PH2-J&GPlexS. Jewellery & Gemplex 3  
Dubai United Arab Emirates

T: +971 56 665 8699  
E: [info@arkomprojectmanagement.com](mailto:info@arkomprojectmanagement.com)

[www.arkomprojectmanagement.com](http://www.arkomprojectmanagement.com)

